



Austin Community Foundation

Mid-Term Active Pool

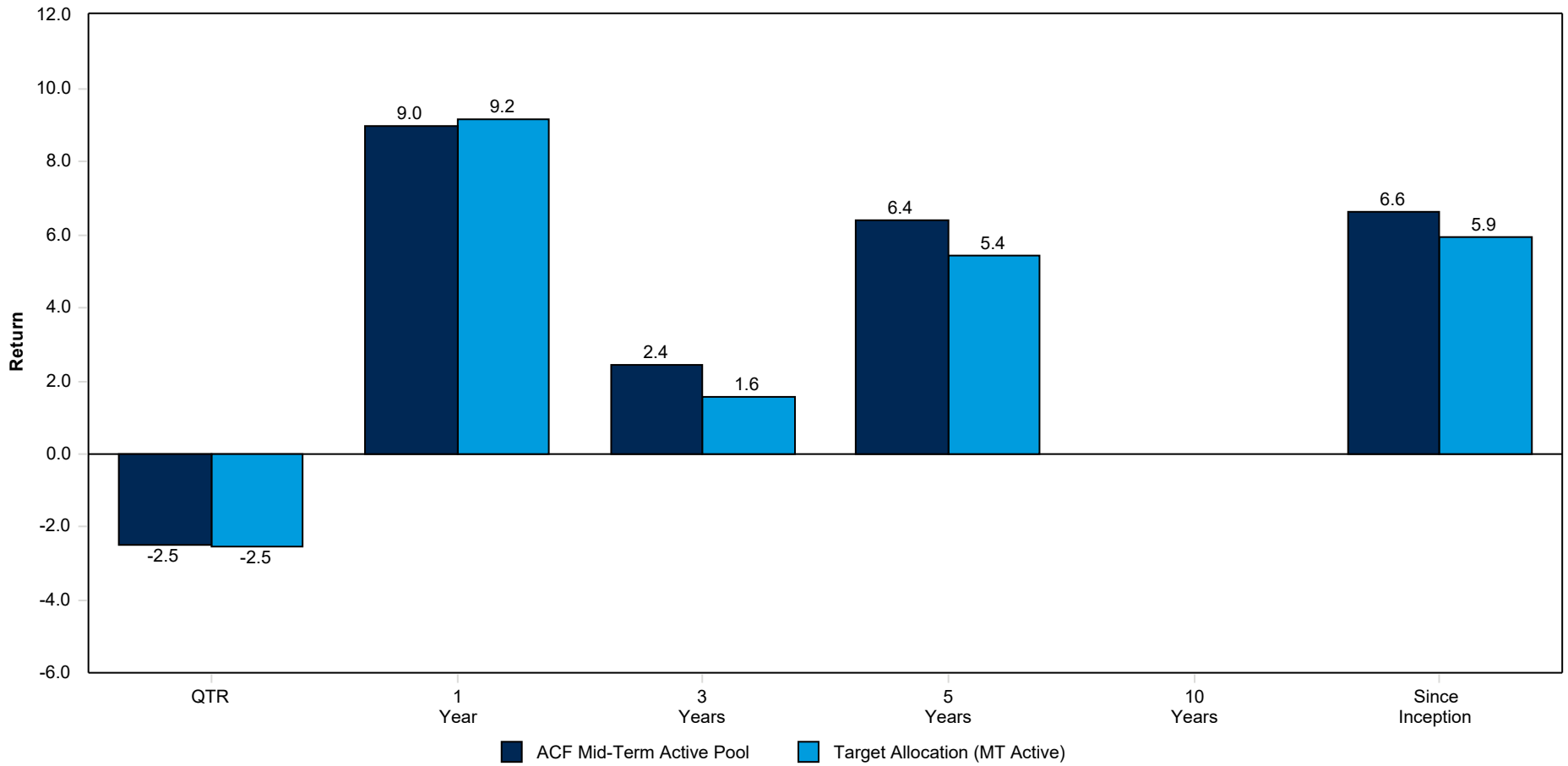
December 31, 2024

Content is confidential and any dissemination or distribution is strictly prohibited. Information has been obtained from a variety of sources believed to be reliable though not independently verified. Any forecast represents future expectations and actual returns, volatilities and correlations will differ from forecasts. Past performance does not indicate future performance, and there is a risk of loss of all or part of your investment. Indices cannot be invested in directly. Index returns assume reinvestment of any and all distributions and do not reflect any fees or expenses. This presentation does not represent a specific investment recommendation. Please consult with your advisor, attorney and accountant, as appropriate, regarding specific advice. Please reference the disclosures at the end of this presentation for additional information related to the material presented.



Austin Community Foundation

M-T Active Pool
December 31, 2024



	Current Quarter	1 Year	3 Years	5 Years	7 Years	10 Years	Since Inception	Inception Date
ACF Mid-Term Active Pool	-2.48	8.99	2.43	6.41	-	-	6.63	09/2018
Target Allocation (MT Active)	-2.54	9.16	1.55	5.43	-	-	5.94	09/2018

Austin Community Foundation: Mid-Term Active Pool

Current Asset Allocation

December 31, 2024



<i>Asset Classes</i>	<i>Total Assets</i>	<i>Total Current Allocation</i>	<i>Strategic Target Allocation</i>	<i>Over/Under Weight Strategic Target</i>
Cash	\$ 171,066	2.2%	2.0%	0.2%
TIPS	\$ 82,716	1.1%	1.0%	0.1%
Broad Domestic Bonds	\$ 1,958,546	24.9%	25.0%	-0.1%
Dynamic Bonds	\$ 635,118	8.1%	8.0%	0.1%
Global Bonds	\$ 150,703	1.9%	2.0%	-0.1%
High Yield Bonds	\$ 157,133	2.0%	2.0%	0.0%
<i>Global Fixed Income & Cash Total</i>	<i>\$ 3,155,282</i>	<i>40.1%</i>	<i>40.0%</i>	<i>0.1%</i>
Large-Cap U.S. Equity	\$ 1,709,829	21.7%	21.0%	0.7%
Mid-Cap U.S. Equity	\$ 719,335	9.1%	7.0%	2.1%
Small-Cap U.S. Equity	\$ 161,292	2.1%	4.0%	-1.9%
Developed International Equity	\$ 982,452	12.5%	13.0%	-0.5%
Emerging Market Equity	\$ 455,983	5.8%	6.0%	-0.2%
Broad Real Assets	\$ 379,847	4.8%	5.0%	-0.2%
US REITs	\$ 301,672	3.8%	4.0%	-0.2%
<i>Global Equities Total</i>	<i>\$ 4,710,409</i>	<i>59.9%</i>	<i>60.0%</i>	<i>-0.1%</i>
Total Assets	\$ 7,865,691	100.0%	100.0%	0.0%