

Helping Clients Prosper.



DiMEO SCHNEIDER
& ASSOCIATES, L.L.C.

Austin Community Foundation

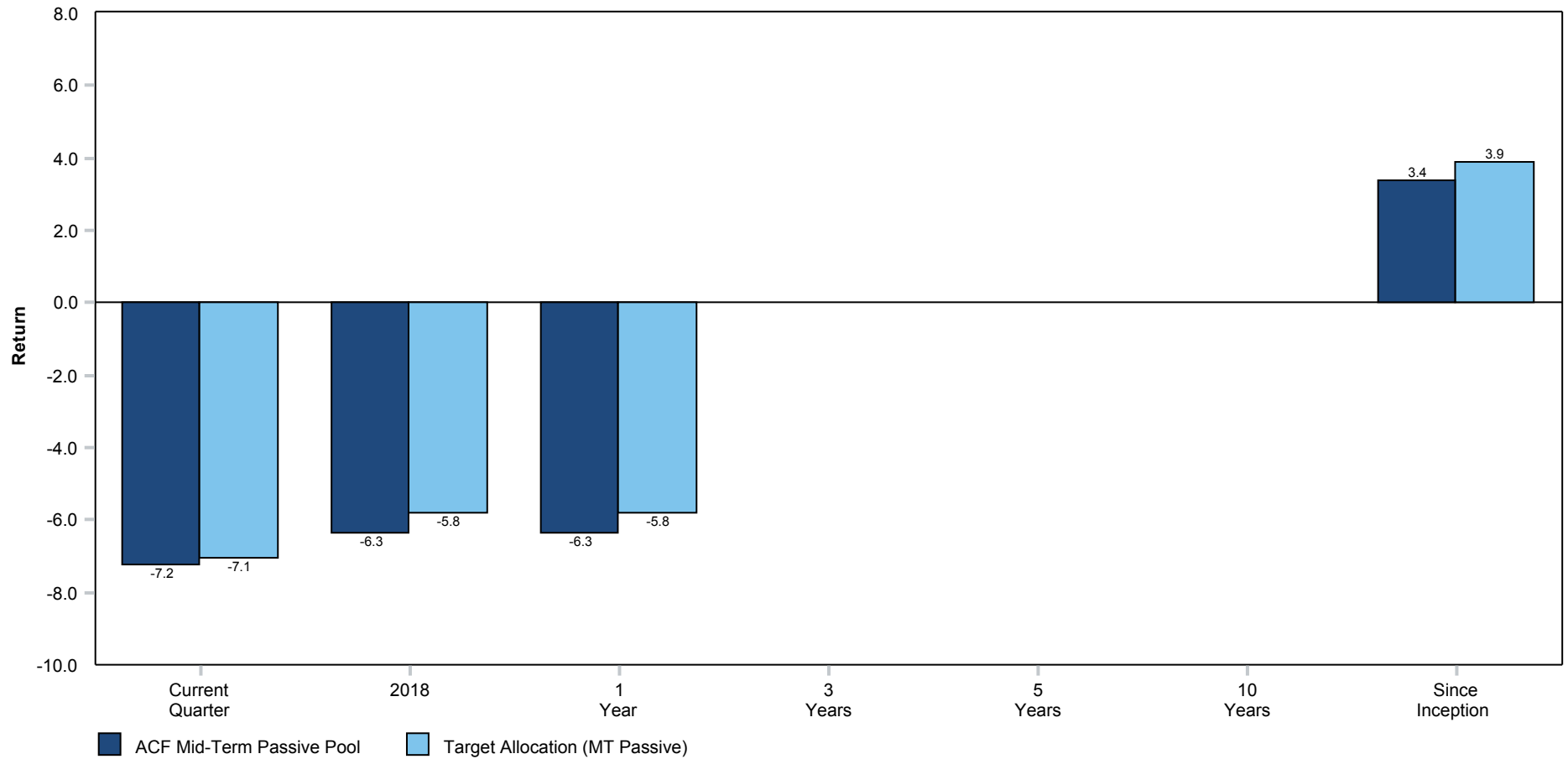
Mid-Term Passive Pool

December 31, 2018

This report is intended for the exclusive use of clients or prospective clients of DiMEO Schneider & Associates, L.L.C. Content is privileged and confidential. Any dissemination or distribution is strictly prohibited. Information has been obtained from a variety of sources believed to be reliable though not independently verified. Any forecast represent median expectations and actual returns, volatilities and correlations will differ from forecasts. Past performance does not indicate future performance.

Austin Community Foundation

M-T Passive Pool
December 31, 2018



	Current Quarter	YTD	1 Year	3 Years	5 Years	7 Years	10 Years	Since Inception	Inception Date
ACF Mid-Term Passive Pool	-7.21	-6.33	-6.33	N/A	N/A	N/A	N/A	3.39	01/01/2017
Target Allocation (MT Passive)	-7.06	-5.82	-5.82	N/A	N/A	N/A	N/A	3.87	01/01/2017

Austin Community Foundation: Mid-Term Passive Pool
Current Asset Allocation
December 31, 2018



<i>Asset Classes</i>	<i>Total Assets</i>	<i>Total Current Allocation</i>	<i>Strategic Target Allocation</i>	<i>Over/Under Weight Strategic Target</i>
Cash	\$ 393,254	3.3%	2.0%	1.3%
TIPS	\$ 368,149	3.0%	3.0%	0.0%
Broad Domestic Bonds	\$ 3,357,920	27.8%	27.0%	0.8%
Foreign Bonds	\$ -	0.0%	0.0%	0.0%
Emerging Market Bonds	\$ 372,059	3.1%	3.0%	0.1%
High Yield Bonds	\$ 599,719	5.0%	5.0%	0.0%
<i>Global Fixed Income & Cash Total</i>	<i>\$ 5,091,101</i>	<i>42.1%</i>	<i>40.0%</i>	<i>2.1%</i>
Large-Cap U.S. Equity	\$ 2,320,843	19.2%	20.0%	-0.8%
Mid-Cap U.S. Equity	\$ 680,214	5.6%	6.0%	-0.4%
Small-Cap U.S. Equity	\$ 328,288	2.7%	3.0%	-0.3%
Developed International Equity	\$ 1,989,632	16.5%	17.0%	-0.5%
Emerging Market Equity	\$ 1,219,222	10.1%	10.0%	0.1%
Global REITs	\$ 456,551	3.8%	4.0%	-0.2%
<i>Equities (Public) Total</i>	<i>\$ 6,994,750</i>	<i>57.9%</i>	<i>60.0%</i>	<i>-2.1%</i>
Total Assets	\$ 12,085,851	100.0%	100.0%	0.0%