

*Helping Clients Prosper.*



DiMEO SCHNEIDER  
& ASSOCIATES, L.L.C.

# Austin Community Foundation

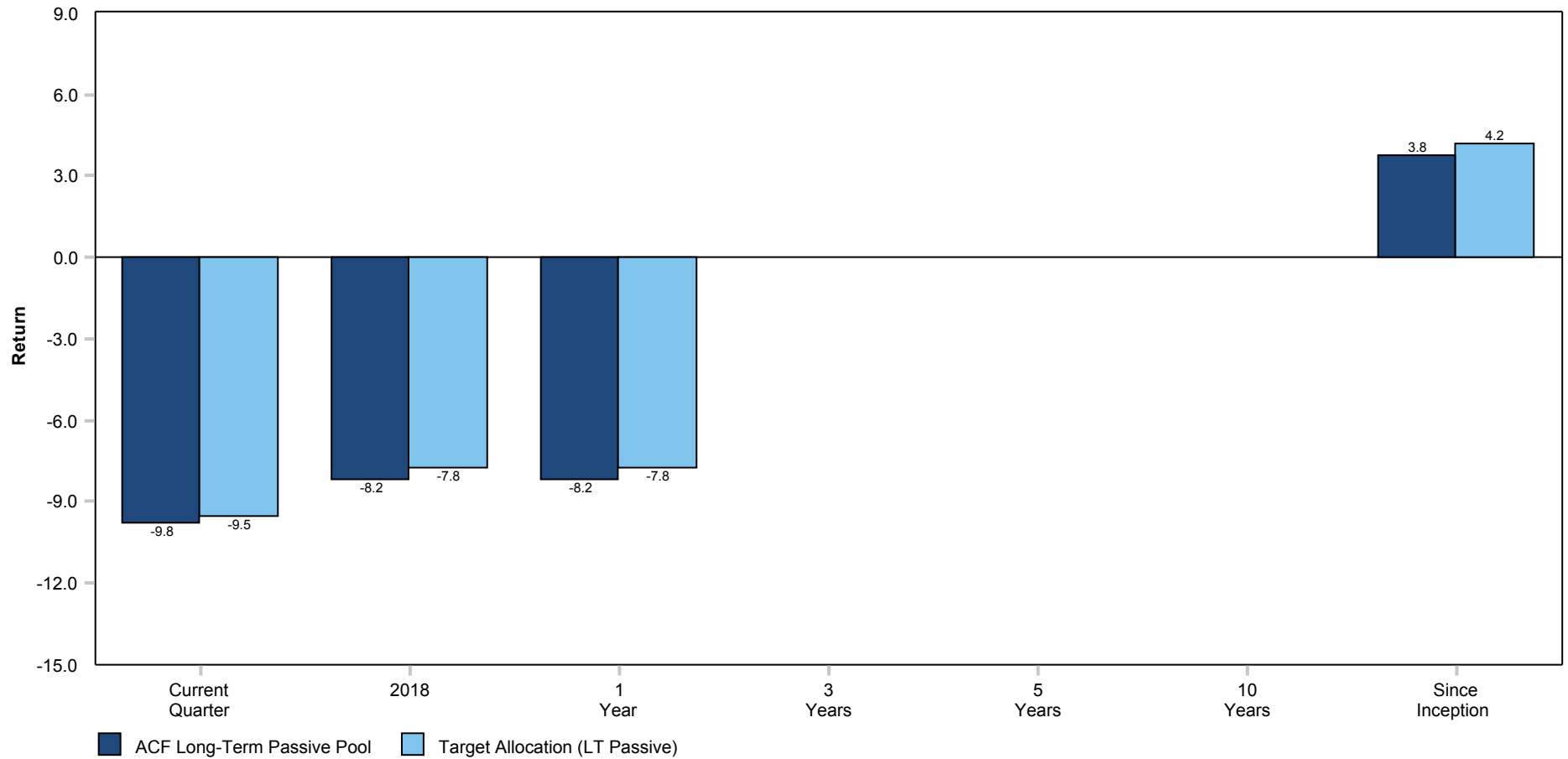
## Long-Term Passive Pool

December 31, 2018

*This report is intended for the exclusive use of clients or prospective clients of DiMeo Schneider & Associates, L.L.C. Content is privileged and confidential. Any dissemination or distribution is strictly prohibited. Information has been obtained from a variety of sources believed to be reliable though not independently verified. Any forecast represent median expectations and actual returns, volatilities and correlations will differ from forecasts. Past performance does not indicate future performance.*

# Austin Community Foundation

L-T Passive Pool  
December 31, 2018



	Current Quarter	YTD	1 Year	3 Years	5 Years	7 Years	10 Years	Since Inception	Inception Date
<b>ACF Long-Term Passive Pool</b>	<b>-9.78</b>	<b>-8.19</b>	<b>-8.19</b>	<b>N/A</b>	<b>N/A</b>	<b>N/A</b>	<b>N/A</b>	<b>3.76</b>	<b>02/01/2017</b>
Target Allocation (LT Passive)	-9.54	-7.75	-7.75	N/A	N/A	N/A	N/A	4.20	02/01/2017

*Austin Community Foundation: Long-Term Passive Pool*  
*Current Asset Allocation*  
*December 31, 2018*



<i>Asset Classes</i>	<i>Total Assets</i>	<i>Total Current Allocation</i>	<i>Strategic Target Allocation</i>	<i>Over/Under Weight Strategic Target</i>
Cash	\$ 273,266	4.8%	2.0%	2.8%
TIPS	\$ -	0.0%	0.0%	0.0%
Broad Domestic Bonds	\$ 830,183	14.7%	14.0%	0.7%
Foreign Bonds	\$ -	0.0%	0.0%	0.0%
Emerging Market Bonds	\$ 117,904	2.1%	2.0%	0.1%
High Yield Bonds	\$ 109,756	1.9%	2.0%	-0.1%
<i>Global Fixed Income &amp; Cash Total</i>	<i>\$ 1,331,109</i>	<i>23.5%</i>	<i>20.0%</i>	<i>3.5%</i>
Large-Cap U.S. Equity	\$ 1,436,981	25.4%	27.0%	-1.6%
Mid-Cap U.S. Equity	\$ 423,704	7.5%	8.0%	-0.5%
Small-Cap U.S. Equity	\$ 201,091	3.6%	4.0%	-0.4%
Developed International Equity	\$ 1,237,798	21.9%	23.0%	-1.1%
Emerging Market Equity	\$ 819,363	14.5%	14.0%	0.5%
Global REITs	\$ 213,048	3.8%	4.0%	-0.2%
<i>Global Equities Total</i>	<i>\$ 4,331,985</i>	<i>76.5%</i>	<i>80.0%</i>	<i>-3.5%</i>
<b>Total Assets</b>	<b>\$ 5,663,094</b>	<b>100.0%</b>	<b>100.0%</b>	<b>0.0%</b>