



# Austin Community FOUNDATION

An aerial photograph of Austin, Texas, showing the city skyline in the background with various skyscrapers and buildings. In the foreground, there is a large, lush green park area with a winding river or stream. The sky is a mix of blue and orange, suggesting sunset or sunrise. The overall scene is vibrant and scenic.

*Creating a  
more vibrant  
community.*

**2025 ANNUAL REPORT**

# 2025

AT A GLANCE



**\$96.5 million**  
awarded in grants



**63%**  
of grants stayed local



**\$117 million**  
in gifts from donors



**1,392**  
funds held at ACF



**\$669 million**  
in assets at ACF

## A Letter to Our Community

**Dear friends,**

Our region is not the same place it was a decade ago—and neither is philanthropy. As Central Texas grows more dynamic and complex, the role of a community foundation must evolve alongside it. That evolution requires more than generosity alone; it calls for partnership, strategic insight, and a shared commitment to long-term impact.

**Austin Community Foundation exists to be that trusted partner in philanthropy.** Each year, we see that trust in action as individuals, families, and businesses align their giving around a shared vision: a vibrant region where everyone has the opportunity to thrive. By giving to or through ACF, our donors are not only supporting individual causes—they are strengthening a powerful collective effort to advance opportunity across Central Texas.

In 2025, together, we awarded \$96.5 million through 6,842 grants to nonprofits across our region and beyond. Behind every number in this report is a story—a student taking a first step toward college, a family securing stable housing, a nonprofit expanding access to essential services. These outcomes reflect the strength of community-led solutions and the impact of strategic, data-informed philanthropy.

The past year also marked continued progress in advancing our core priorities. Through thoughtful grantmaking, community research, and partnership, we worked to expand economic mobility and increase housing affordability. We deepened relationships with fundholders, welcomed new philanthropic partners into our network, and continued convening leaders around the issues shaping Austin's future.

**None of this happens in isolation.** Our role is to listen, to learn, and to act alongside the community—grounded in data, informed by lived experience, and focused on lasting results. As Central Texas continues to evolve, so will we. We remain committed to stewarding resources in ways that are responsive, equitable, and forward-looking.

The progress reflected in these pages is a testament to your generosity and your belief that philanthropy can be a force for lasting good. Thank you for your partnership. Together, we are building a stronger, more inclusive Central Texas—today and for the future.

**With gratitude,**

Mike Nellis  
CEO



# Meeting the Moment

**At Austin Community Foundation (ACF), we help generosity move through communities—quickly, strategically, and right here in Central Texas.** Whenever an urgent need occurs, ACF connects with trusted partners to find out where philanthropic capital can be most effective, and we share this timely information with our fundholders. From flood recovery, to sustaining local media, to filling gaps in food access, our team helps fundholders mobilize with speed, empathy, and a deep commitment to our shared home—and in 2025, ACF fundholders consistently rose to meet the moment for Central Texas.

***“I’m continually inspired by our fundholders’ readiness to help. They find real meaning in giving locally, and in times of crisis, they don’t hesitate, they shine.”***

- Rebekah Anthony  
*Senior Director, Donor Engagement*

In July, catastrophic flooding swept Central Texas, leaving families grieving loved ones and communities in urgent need of support. ACF acted quickly, directing grants to three trusted funds, connecting with fundholders, and even assisting the Community Foundation of the Texas Hill Country with gift processing as it fielded an unprecedented number of donations. **Over a span of eight weeks, ACF fundholders overwhelmingly responded to the call, giving more than \$855,000 to trusted organizations driving flood relief efforts.**



When funding for public broadcasting became uncertain, ACF fundholders recognized that trusted local media is a cornerstone of a strong community. Through ACF, they increased grantmaking support for KUT—Austin’s NPR station—and Austin PBS, to help ensure vital reporting, education, and storytelling continue. These gifts showed a shared understanding that when we invest locally, we sustain the institutions that strengthen Central Texas.

In November, when SNAP benefits expired, thousands of families were left unsure of where their next meal would come from. ACF immediately issued a call to action and provided a \$50,000 unrestricted grant to the Central Texas Food Bank. Fundholders followed with an additional \$123,000 in grants, and many made direct contributions to the Food Bank beyond that total.



Being our community’s trusted partner in philanthropy means being able to respond to any need as soon as it arises. And our fundholders have proven time and again that they don’t just respond to the current moment—they invest in the future of Central Texas. To every fundholder who stepped forward this year, thank you. **Together, we’re showing that philanthropy is about more than just responding to challenges; it’s about building a community that’s ready for what comes next.**



# Forever Austin Fund

## A Legacy for Generations

In 2025, Austin Community Foundation launched a new chapter in our philanthropic work with the Forever Austin Fund—a permanent community resource designed to ensure that donors’ legacies power meaningful change in Central Texas for generations to come. Each year, ACF will award Forever Austin Fund grants to local nonprofits working to address both urgent and systemic needs in our community.

For nearly 50 years, donors have entrusted ACF with legacy gifts because we serve as a trusted partner in philanthropy, with a deep knowledge of our region. The Forever Austin Fund builds on that trust. By stewarding endowed resources and deploying them strategically each year, ACF translates long-term generosity into responsive, community-informed action.

**In a rapidly changing region, a permanent foundation of support provides the stability our future needs.** By preserving and growing philanthropic assets over time, each gift continues to support our community year after year, adapting to Central Texas’ evolving needs. The Forever Austin Fund strengthens our ability to steward resources wisely and serve as a trusted philanthropic anchor for Central Texas—today, tomorrow, and forever.

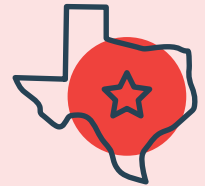
## Be Part of This Work

The first year of the Forever Austin Fund offered a glimpse of what sustained, community-centered philanthropy can accomplish. When permanent resources align with community insight, the result is thoughtful investment in the people and organizations shaping Central Texas’ future.

**As the Forever Austin Fund continues to grow, so does its potential.** By including Austin Community Foundation in your will or making an endowed gift, your generosity becomes part of a permanent source of opportunity and resilience for Central Texas. Contact us at [impact@austincf.org](mailto:impact@austincf.org) to learn more and become part of this work.



**\$2.3 million**  
awarded in grants



**99**  
local nonprofits  
received grants



**\$23,500**  
average grant size

# Distribution of Grants by Strategy Area

49%

**ECONOMIC  
MOBILITY**

40%

**HEALTH AND  
HUMANITIES**

11%

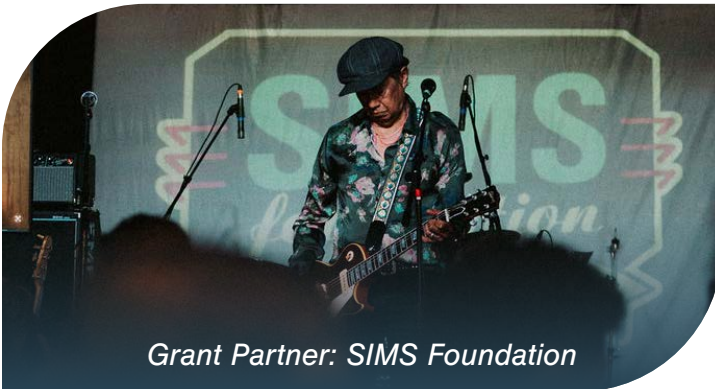
**NURTURING  
OUR REGION**



*Grant Partner: Austin Ed Fund*

## Economic Mobility

**\$1.15 million awarded to 39 organizations** tackling systemic barriers to wealth, supporting housing stability, and expanding career and small business opportunities.



*Grant Partner: SIMS Foundation*

## Health and Humanities

**\$949,500 awarded to 44 organizations** that are improving outcomes for health and wellness and expanding access to arts and cultural experiences.



*Grant Partner: The Trail Conservancy*

## Nurturing Our Region

**\$249,000 awarded to 16 organizations** to protect green spaces, enhance environmental stewardship, and support the well-being of animals.

To read more about the Forever Austin Fund, the generous donors who make it possible, and all of our current grant partners, visit [austincf.org/foreveraustin](https://austincf.org/foreveraustin).

# Housing Accelerator

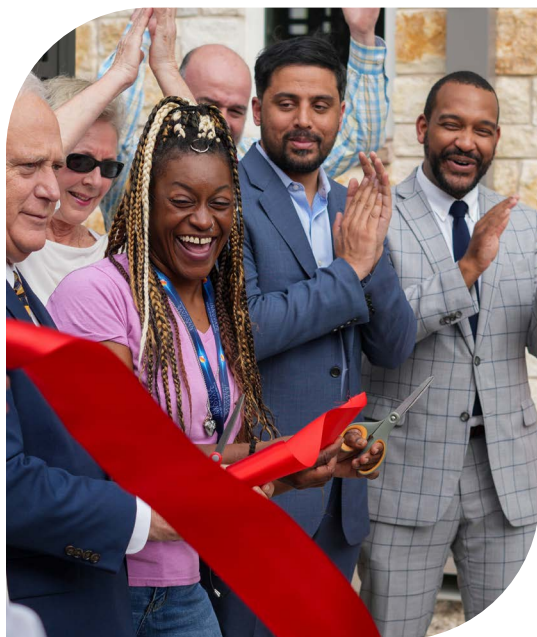
AUSTIN COMMUNITY FOUNDATION

Across Central Texas, the need for safe, stable, and affordable housing continues to grow. By combining research, collaboration, and philanthropic resources, the Housing Accelerator Loan Fund provides fast, flexible capital to accelerate the production of affordable housing.

**In 2025 alone, the Fund invested \$6.3 million in three new projects**—Bailey at Berkman, Ovetta Rosedale, and Goodnight Ranch—totaling approximately 221 units that will serve our region’s most vulnerable neighbors.

The Fund’s revolving model is designed to maximize long-term impact by recycling capital into a sustainable source of financing. Over the course of 2025, three loans were successfully repaid, allowing those dollars to be reinvested into the next round of affordable housing solutions.

In recognition of this innovative approach, the Urban Land Institute awarded ACF’s Housing Accelerator Loan Fund with an Impact Award in the Next Big Idea category. This honor highlights how philanthropic capital can address one of the region’s most urgent challenges—housing affordability—and play a pivotal role in increasing local quality of life. Learn more at [austincf.org/housingaccelerator](https://austincf.org/housingaccelerator).



## Cady Lofts Opens its Doors

In April 2025, the community celebrated the opening of Cady Lofts, a permanent supportive housing development in Central Austin for individuals exiting homelessness. Residents have access to onsite case management, health screenings, job training, and other essential services.

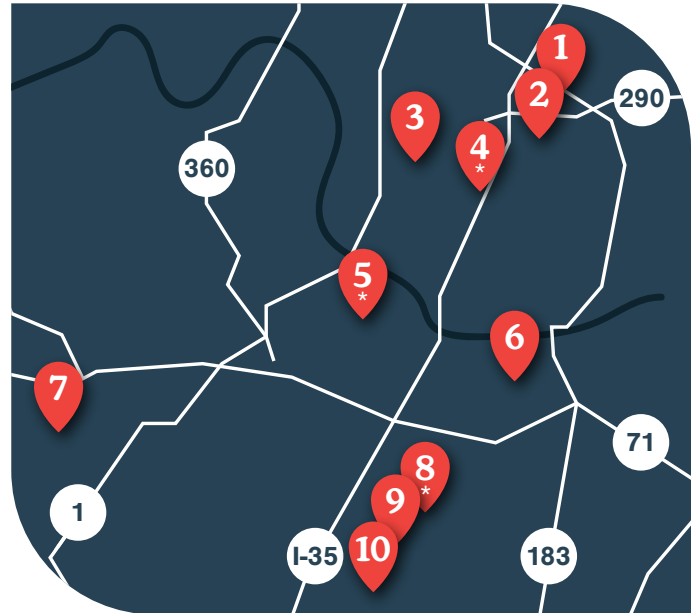
ACF invested a total of \$4.87 million in Cady Lofts through low-interest loans to help fill critical financing gaps. Projects like this are an integral part of the City of Austin’s overall strategy to end chronic homelessness by offering long-term solutions beyond shelters and rapid rehousing.

For residents like Rose, pictured cutting the ceremonial ribbon at the Grand Opening, **Cady Lofts represents more than just housing—it’s a foundation for rebuilding a life.**

IMPACT DATA	2025	TOTAL
<b>Number of Loans Made</b>	3	10
<b>Total Loaned</b>	\$6.3M	<b>\$17.9M</b>
<b>Number of Units Funded</b>	221	<b>1,065</b>
<b>To Rent</b>	174	<b>854</b>
<b>To Own</b>	47	<b>211</b>

# Map of Projects as of December 2025

- 1. Cameron Senior Housing**  
82 supportive units for independent seniors
- 2. Bailey at Berkman (2025)**  
104 units, a quarter of which are reserved for individuals experiencing chronic homelessness
- 3. Ovetta Rosedale (2025)**  
70 units for families with onsite pre-K
- 4. \*Cady Lofts**  
100 supportive units for people transitioning out of homelessness
- 5. \*Lamar Square (The Bloom)**  
150 units remodeled, plus 400 new units for adults with intellectual disabilities
- 6. The Sasha**  
60 supportive units for survivors of domestic violence and their families
- 7. Sunset Ridge**  
438 units total, with 220 units for households making 50-80% of the area median income



- 8. \*Willows Crossing**  
38 units for affordable homeownership
- 9. Persimmon Point**  
126 units for affordable homeownership
- 10. Goodnight Ranch (2025)**  
47 units for affordable homeownership

*\*Indicates loan was fully repaid.*

## New Possibilities on Church Grounds

In the fall, Austin Community Foundation partnered with RootedGood, Texas Methodist Foundation, and Wesleyan Impact Partners to host Faith & Philanthropy: New Possibilities on Church Grounds, a statewide convening of funders and faith leaders. Across the U.S., more churches are closing than opening, and without intentional planning, many properties face vacancy or sale. Churches have long served as neighborhood anchors—hosting food pantries, child care, voting, education, and community programs. **With the right vision, partners, and investments, these sites can continue to serve as vital community assets.**

The convening was held at the 04 Center in South Austin, a former church that has been reimagined as a thriving music venue and shared community space—showcasing what’s possible when redevelopment aligns with local needs. It also highlighted how funders, including ACF through its Housing Accelerator Loan Fund, can play a critical role by supporting visioning, community engagement, and providing early-stage capital to give these properties new, lasting life.



## Investing with Purpose

ACF launched FundATX in 2017 as an impact investing program dedicated to improving economic mobility for Central Texans. We do this by providing low-cost loans for nonprofits and community development financial institutions. Once repaid, these loans generate financial returns that allow philanthropic capital to be recycled back into the community—**fueling even more impact.**

ACF remains committed to evolving this program to better reflect our community’s needs while continuing to provide cost-effective loan capital where it’s needed most. Our fundholders have the benefit of being able to easily allocate a portion of their assets to FundATX, but anyone is welcome to make a philanthropic gift to support this effort.

Learn more and discover how you can get involved by visiting [austincf.org/fundatx](http://austincf.org/fundatx).

### Performance

RETURN RATE	TARGET RATE	LOSS RATE
<b>2.5%</b>	<b>2%</b>	<b>0%</b>

### Investment Distribution

#### HOUSING STABILITY

<b>Texas Housing Conservancy</b>	<b>\$400,000</b>
----------------------------------	------------------

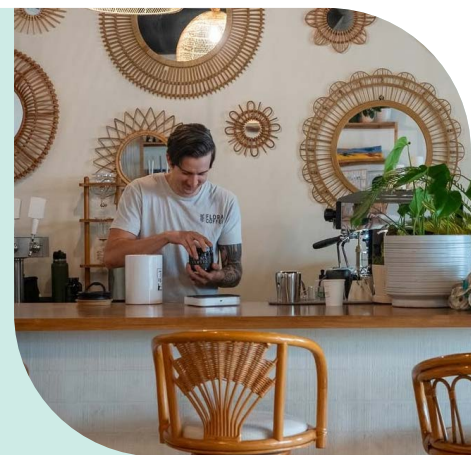
#### SMALL BUSINESS GROWTH & ENTREPRENEURSHIP

<b>Grameen America</b>	<b>\$500,000</b>
<b>LiftFund</b>	<b>\$250,000</b>
<b>PeopleFund</b>	<b>\$500,000</b>

## Brewing Business: PeopleFund and Flora Coffee

For nearly a decade, ACF’s partnership with PeopleFund has demonstrated how strategic investment can open doors for entrepreneurs who fuel our region’s economic vitality. PeopleFund’s Small Business Accelerator equips entrepreneurs with the tools to transform ideas into sustainable enterprises. To date, 415 entrepreneurs have graduated, creating or retaining over 1,500 jobs, with 78% of businesses still operating three years later.

One of those entrepreneurs is Josh Whitehead, founder of Flora Coffee. After being turned away by traditional lenders, Josh received capital, training, and ongoing support through PeopleFund. When faced with an unexpected week-long closure, the skills and financial resources he gained helped his business survive and thrive. “What truly sets PeopleFund apart is their commitment beyond the loan,” said Josh. “They offer resources, mentorship, and guidance long after... it’s clear they’re investing in people and communities.”



# 2025

GRANT CYCLE  
AT A GLANCE



**\$1.1 million**  
awarded in grants  
to 29 nonprofits



**219 applications**  
received in total

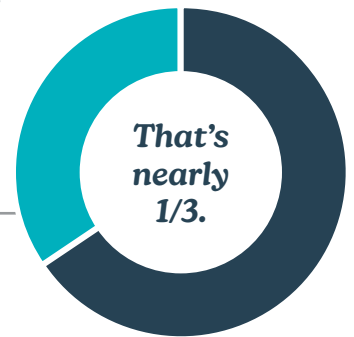


**170 volunteers**  
reviewed applications

# Economic Mobility

ACF's strategic programs, the Hispanic Impact Fund and Women's Fund, operate as collective-giving networks led by community members who share responsibility for the vision, fundraising, and grantmaking. Driven by data and community voice, each program seeks to advance economic mobility by providing unrestricted, general operating support for local nonprofits.

In addition to the record-breaking numbers on the left, in 2025, **31% of nonprofits awarded were first-time grant partners**, reflecting the growing reach of these programs.



## Seeking Shared Learnings



**For the first time in 2025, the Hispanic Impact Fund and Women's Fund partnered to host events that united the two programs around shared strategies for advancing economic mobility.**

Inspired by their overlapping impact areas focused on childhood development, the Hispanic Impact Fund and Women's Fund co-hosted a screening of *No Small Matter*, a documentary showing how early childhood experiences shape lifelong outcomes. A panel of local leaders discussed the importance of expanding access to affordable, high-quality child care and early learning, highlighting both challenges families face and the local momentum building through initiatives like Raising Travis County.

Another event brought program members on a tour of Saint Louise House—a shared grant partner and supportive housing community serving families overcoming violence, trauma, and housing instability. The visit highlighted how safe, affordable housing combined with two-generation, wraparound services helps families heal, achieve stability, and build long-term economic mobility.

Events like these offer members the chance to learn about critical issues affecting economic mobility, engage thoughtfully in equitable philanthropy, build new connections, and gain an inside look at the work being done across Central Texas. To learn more or join a program, visit [austincf.org/economic-mobility](https://austincf.org/economic-mobility).

## Celebrating 100 Grants

In 2025, the Hispanic Impact Fund made its 100th grant, a major milestone for this community-led program, which has now granted over \$2 million since its inception.

This year, the Fund awarded \$550,000 to 16 Latino-led and -serving nonprofits providing key services and working toward systems-level change in the following impact areas:



**EARLY CHILDHOOD  
EDUCATION**



**HEALTH &  
WELLNESS**



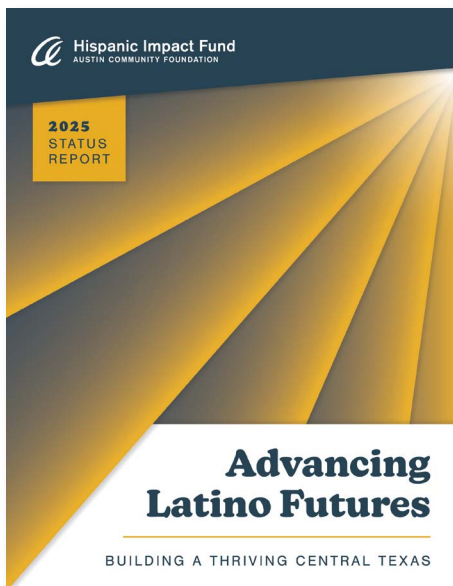
**JOB SKILLS &  
ENTREPRENEURSHIP**



**LEADERSHIP  
DEVELOPMENT**

## Revising Strategies to Reflect the Community

Through a series of Strategy Labs—facilitated workshops designed to translate new data into action—more than 70 leaders, nonprofit partners, investors, and community members helped refine three of the Hispanic Impact Fund’s grantmaking priorities. This process ensures the Fund’s impact areas remain community-informed and responsive to the evolving needs of Central Texas. Learn more about this unique process and read the refined strategies at [austincf.org/2025-strategy-labs](https://austincf.org/2025-strategy-labs).



## Advancing Latino Futures

In January of 2025, ACF’s Hispanic Impact Fund released a new report, *Advancing Latino Futures*. The report provides an in-depth look at recent progress, challenges, and emerging opportunities for Latinos living in Central Texas, examining key indicators of economic mobility through the Fund’s four impact areas.

For example, the percentage of Latino households with zero net worth has decreased from 27% to 18% over the past four years. While strides have been made in wealth building for Latino families, the uninsured rate remains high, underscoring the need for greater healthcare access and enrollment.

For more insights, read the full report in English or Spanish at [austincf.org/latinofutures](https://austincf.org/latinofutures).



## Continued Growth

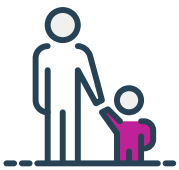
Since its inception, the Women's Fund has granted \$4.5 million to local nonprofits improving life for women in Central Texas, with a particular focus on those facing the greatest barriers to economic mobility.

In addition to this growing impact, **the Women's Fund saw a 31% increase in grants committee members for 2025**, boasting an 80-person all-time high. Coupled with community reviewers—a group of local volunteers with lived experience—103 individuals came together to review grant applications, representing more than 43 zip codes and reflecting the diverse range of voices informing this community-led process.

In 2025, the Women's Fund made its largest collective investment to date, totalling \$550,000 distributed to 15 nonprofits—which together serve about 200,000 women annually in the following impact areas:



*Grant Partner:  
El Buen Samaritano*



**CHILD CARE**



**EDUCATION**



**HOUSING**



**WOMEN'S HEALTH**



**UNINTENDED PREGNANCY PREVENTION**

## Grant Partner Spotlight: The SAFE Alliance

The SAFE Alliance was one of the first nonprofits to receive funding from the Women's Fund over 20 years ago. With a mission to "Stop Abuse For Everyone," SAFE values input from survivors and adapts its services based on the real-life needs of the community. As a result, SAFE is expanding to provide permanent supportive housing through The Sasha—now under construction with support from ACF's Housing Accelerator Loan Fund.

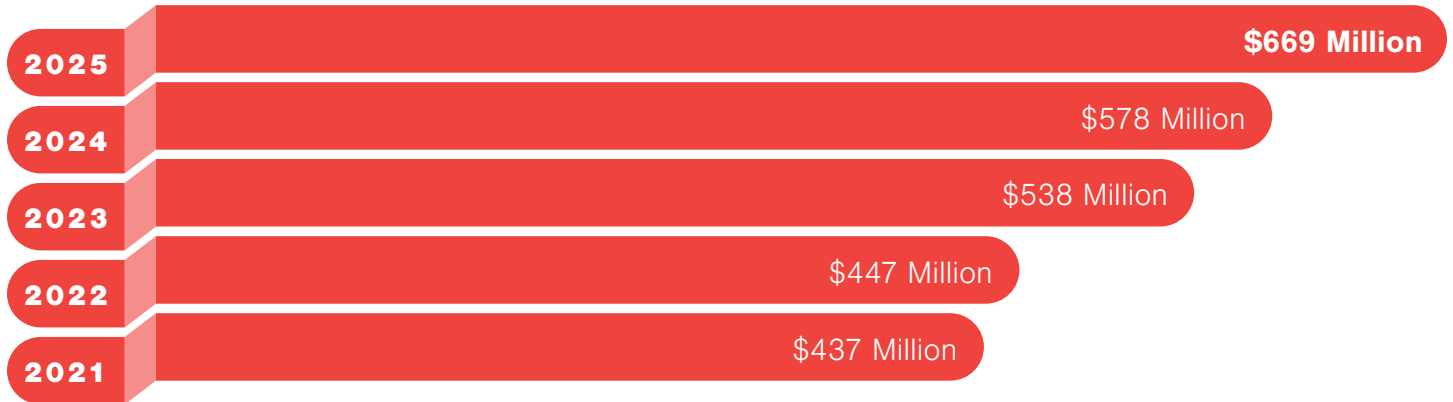


In 2025, we sat down with CEO Julia Spann to learn about SAFE's impact and how the Women's Fund has supported it. Watch the video at [austincf.org/safe](https://austincf.org/safe).

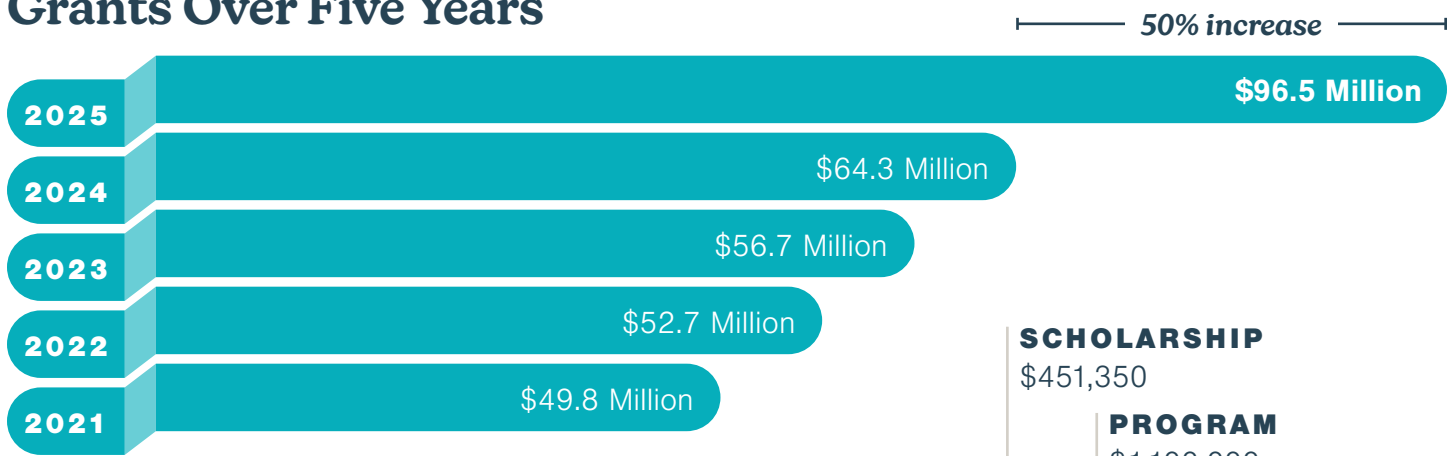
# Grants & Financials

ACF HAS  
GRANTED  
**\$732M**  
SINCE 1977

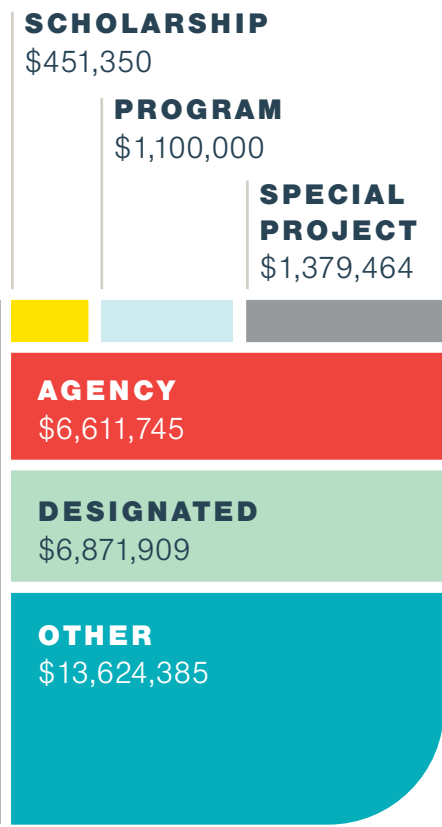
## Assets Over Five Years



## Grants Over Five Years



## \$96.5 Million in Grants by Fund Type





Since 2008, ACF has partnered with community leaders, donors, and educators to distribute more than \$9.9 million in scholarship awards to 5,338 students.

# Scholarships

## 2025 Highlights



**163**  
scholarships  
awarded



**\$451,350**  
total amount  
awarded



**69%**  
attending Texas  
schools



**46%**  
first-generation  
college students

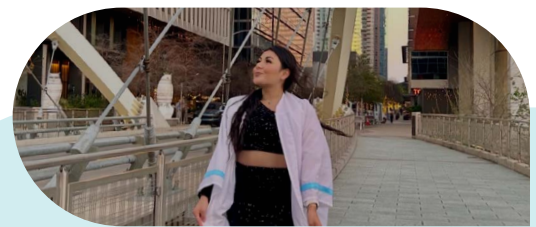
## ACF's Pooled Scholarship Fund: Austin Futures

Designed to expand access to postsecondary education and advance economic mobility for Central Texas students, Austin Futures invests in our region's homegrown talent and helps remove one of the most significant barriers to postsecondary success: cost.

By pooling gifts from individuals, families, and businesses, Austin Futures creates a flexible, responsive fund that adapts to student needs and provides tuition support for students ready to pursue vocational, two-year, or four-year pathways. Donors at every level help open doors for high-potential students who are building meaningful futures right here in our region.

**In 2025, ACF awarded \$37,500 in scholarships to 15 students through Austin Futures.** Ten students enrolled in four-year colleges, and five began their journeys at community colleges—each taking a step towards expanding their earning potential and creating greater opportunities for themselves and their families.

At a time when the cost of higher education continues to rise, Austin Futures represents a collective investment in the next generation of Central Texas leaders. Learn more and support this work at [austincf.org/austinfutures](https://austincf.org/austinfutures).



***“Being awarded this scholarship—my very first—has not only lifted a weight off my shoulders but also reminded me that my dreams are within reach.”***

- Michelle  
2025 Austin Futures recipient

# Our Fundholder Experience

## Fundholders See Their Philanthropy in Action

In September 2025, ACF hosted a site visit at Mobile Loaves & Fishes' (MLF) Community First! Village—a transformative community for people exiting homelessness. The visit offered fundholders a firsthand look at how their giving can create lasting change in Central Texas.



Since 2020, ACF fundholders have granted \$1.9 million to support MLF's work, and attendees found it meaningful to hear directly from the organization's Founder and CEO, Alan Graham. During their tour of the neighborhood, they learned how sustained philanthropic investment and a shared commitment to innovation helped bring the Village's unique model to life.

Events like this deepen relationships between fundholders and nonprofits, while demonstrating the tangible outcomes of philanthropy. The experience reinforced a central message: **philanthropy is not a solitary act—it is a shared journey, and ACF is here to partner with fundholders every step of the way.**

## Local Expertise for Greater Impact

During the spring, ACF hosted *Donor-Advised Funds Explained: A Powerful Way to Give*, spotlighting how DAFs make giving simple, strategic, and tax-smart. The session also explored how ACF helps fundholders drive lasting, positive change in our region.

Over 60% of grants from ACF donor-advised funds stay local—strengthening our ecosystem of nonprofits, addressing urgent needs, and building a more vibrant community. With decades of experience and a deep knowledge of Central Texas, ACF provides tailored philanthropic advising to help fundholders maximize their impact and create a legacy that reflects their values.

While DAFs are the most popular giving tool at ACF, we offer a variety of fund types to help individuals, corporations, and nonprofits reach their unique goals. Fundholders benefit from peer learning opportunities, robust complex asset acceptance, and creative funding options—including impact investments that address local challenges while growing philanthropic dollars. Even ACF's fees are reinvested locally, ensuring every ounce of your generosity strengthens the community you love.

**Learn about our fund offerings and begin your ACF journey at [austincf.org/open-a-fund](https://austincf.org/open-a-fund).**





# austin *IN* common

In 2025, more than 700 community members gathered at ACL Live for ACF’s second Austin in Common, bringing together donors, partners, and leaders committed to strengthening Central Texas. More than just a fundraiser, this event was an inspiring celebration of Austin’s shared future and collective responsibility.

Austin in Common demonstrates the impact of people coming together to invest in solutions that move our community forward. The generosity in that room alone helped drive a **10% increase in grantmaking through ACF’s Hispanic Impact Fund and Women’s Fund**—translating to \$1.1 million being awarded to 29 nonprofits working to advance economic mobility and close the opportunity gap in Central Texas.

“Austin is experiencing explosive growth, but not equitably. We have a decision to make: watch the gap between prosperity and access widen, or actively invest in bridging that gap,” Host Committee Member Dierdre Walsh reflected.

Throughout the evening, a clear theme emerged: If we want a thriving, inclusive city, we must invest in it together. And, as Dierdre says, **“You don’t have to be a billionaire to make a meaningful impact. You don’t need the perfect plan to act. You just need to care and commit.”**



**“Philanthropy isn’t about wealth—it’s about willingness.”**

- Kendall Antonelli  
2025 Austin in Common  
storyteller & co-owner of  
Antonelli’s Cheese

## Your trusted partner in philanthropy.



Founded in 1977, Austin Community Foundation mobilizes ideas and resources to strengthen Central Texas. Our experienced team helps you create a tailored charitable plan to achieve your personal goals and create the greatest impact where it matters most.

**We know that philanthropy isn’t one-size-fits-all—it’s an evolving journey shaped by life events, financial decisions, and a desire to make a difference close to home.** That’s why we’re committed to working alongside you and your advisors—whenever questions and opportunities emerge. From making an impact today to leaving a lasting legacy, we have a charitable solution for you.

Contact us at [heretohelp@austincf.org](mailto:heretohelp@austincf.org) or 512.472.4483 and a member of our team will be in touch.

# 2025 Team & Leadership

## STAFF

- / Rebekah Anthony, *Senior Director, Donor Engagement*
- / Jordan Bolden, *Investment Accounting Manager*
- / Arthur Brewer, *Senior Gift Planning Officer*
- / Morgan Bullins, *Operations and Service Coordinator*
- / Chelsie Chavez, *Fund Services Manager*
- / Toni Cirlos, *Program Coordinator*
- / Jared Cryan, *Operations and Service Coordinator*
- / Robin Diaz, *Senior Accountant*
- / Laura Gómez, *Scholarship Program Manager*
- / Adiee Gonzales, *Senior Manager, Community Impact*
- / Sydney Goode, *Director, Investments*
- / Jana Griggs, *Vice President, Finance*
- / Cybil Guess, *Chief of Staff*
- / Malcolm Haraway, *Director, IT*
- / Audrey Herrera, *Communications Coordinator*
- / Melissa Holden, *Senior Manager, Operations*
- / El Horsfall, *Senior Creative Content Specialist*
- / Rachel Joachimi, *Grants Specialist*
- / Olivia Kubala, *Operations and Service Coordinator*
- / Meagan Anderson Longley, *Chief Impact Officer*
- / Kim McCrary, *Director, Human Resources and Executive Aide*
- / Zoë Morrisey, *Community Impact Grants Coordinator*
- / Mike Nellis, *Chief Executive Officer*
- / Elizabeth Peña, *Senior Director, Advancement*
- / Lindsay Perlmutter, *Annual Giving Manager*
- / Derek Pierce, *Senior Accounting Manager*
- / Melissa Rupert, *Digital Communications Coordinator*
- / Stephanie Sessa, *Senior Donor Relations Officer*
- / Courtney Smith, *Operations and Service Coordinator*
- / Shannon Stagner, *Donor Relations Officer*
- / Sara Watson, *Director, Fund Services*
- / Misty Whited, *Senior Vice President, Marketing and Communications*

## BOARD OF GOVERNORS

- / Susan Moore, *Chair*
- / Jessica Weaver, *Vice Chair & Treasurer*
- / Scott Flack, *Secretary*
- / Bobbie Barker
- / Darrell Bazzell
- / Toya Bell
- / Alex Brown
- / Rudy Colmenero
- / Montse Fuentes
- / Brandon Janes
- / David Lack
- / Anna Near
- / Milam Newby
- / Geronimo Rodriguez
- / Justin Rosas
- / Harpreet Singh
- / Lathrop Smith
- / Drew Tate
- / Jordan Ware
- / KC Willis

## INVESTMENT COMMITTEE

- / David Lack, *Chair*
- / Drew Tate
- / Bill Bock
- / Dave Martin
- / Tony Schell
- / Sara Seely
- / Venu Shamapant
- / Glenn Stotts
- / Mark Warner